



FO-L2-1

FO-L2-2





FO-L2-3



FO-L2-4



FO-L2-5



FO-L2-6



FO-L2-7



FO-L2-8

FO-L2-9



FO-L2-10



FO-L2-11



FO-L2-12



FO-L2-13



FO-L2-14



FO-L2-15



FO-L2-16



FO-L2-17



FO-L2-18



FO-L2-19



FO-L2-20



FO-L2-21



FO-L2-22





FO-L2-23

FO-L2-24





FO-L2-25



FO-L2-26



FO-L2-27

FO-L2-28



FO-L2-29



FO-L2-30



FO-L2-31



FO-L2-32



FO-L2-33



FO-L2-34



FO-L2-35



FO-L2-36



FO-L2-37



FO-L2-38



FO-L2-39



FO-L2-40



FO-L2-41





FO-L2-42

FO-L2-43



FO-L2-44



FO-L2-45



FO-L2-46





FO-L2-47

FO-L2-48



FO-L2-49





FO-L2-50



FO-L2-51



FO-L2-52



FO-L2-53



FO-L2-54

FO-L2-55



FO-L2-56



FO-L2-57





FO-L2-58



FO-L2-59



FO-L2-60



FO-L2-61



FO-L2-62



FO-L2-63



FO-L2-64



FO-L2-65



FO-L2-66



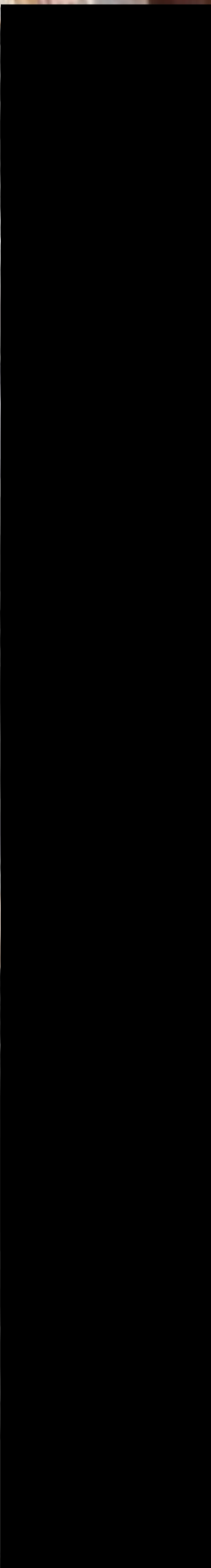
FO-L2-67



FO-L2-68



-L2-69





FO-L2-70



FO-L2-71





FO-L2-72



FO-L2-73



FO-L2-74



FO-L2-75



FO-L2-76



FO-L2-77



FO-L2-78



FO-L2-79



FO-L2-80



FO-L2-81



FO-L2-82





FO-L2-83

FO-L2-84



FO-L2-85



FO-L2-86



FO-L2-87



FO-L2-88



FO-L2-89





FO-L2-90



FO-L2-91



FO-L2-92

FO-L2-93





FO-L2-94



FO-L2-95

FO-L2-96





FO-L2-97

FO-L2-98



FO-L2-99



FO-L2-100



FO-L2-101



FO-L2-102





FO-L2-103

FO-L2-104





FO-L2-105



FO-L2-106

FO-L2-107



FO-L2-108



FO-L2-109



FO-L2-110



FO-L2-111



FO-L2-112



FO-L2-113



FO-L2-114



FO-L2-115





FO-L2-116



FO-L2-117



FO-L2-118

FO-L2-119



FO-L2-120



FO-L2-121



FO-L2-122





FO-L2-123

FO-L2-124





FO-L2-125

FO-L2-126



FO-L2-127



FO-L2-128



FO-L2-129



FO-L2-130



FO-L2-131





FO-L2-132

FO-L2-133

A long, narrow hallway with significant signs of neglect and decay. The walls and ceiling are covered in peeling, cracked, and discolored paint, revealing a rough, textured surface underneath. On the right wall, there is a window with a white frame, partially obscured by the peeling paint. The floor is a light-colored, possibly concrete or stone, and shows some dark spots and debris. At the end of the hallway, a doorway leads to a darker area, where a long, thin object, possibly a pipe or a tool, is leaning against the wall. The overall atmosphere is one of abandonment and poor maintenance.

FO-L2-134



FO-L2-135





FO-L2-136

FO-L2-137



FO-L2-138



FO-L2-139



FO-L2-140



FO-L2-141





FO-L2-142



FO-L2-143

FO-L2-144



FO-L2-145

A photograph of an interior room. In the foreground, a sofa is covered with a brown and white patterned blanket. To the left, a portion of a blue object is visible. In the background, a doorway with a black frame leads to a kitchen area with wooden cabinets. To the right of the doorway is a dark, solid-colored door. The floor is tiled with a light-colored pattern. The walls are white.



FO-L2-146



FO-L2-147



FO-L2-148



FO-L2-149



FO-L2-150



FO-L2-151



FO-L2-152



FO-L2-153



FO-L2-154



FO-L2-155



FO-L2-156



FO-L2-157



FO-L2-158



FO-L2-159



FO-L2-160



FO-L2-161



FO-L2-162



FO-L2-163



FO-L2-164



FO-L2-165



FO-L2-166



FO-L2-167





FO-L2-169




FO-L2-170



FO-L2-171



An aerial photograph of a town. In the upper center, a school building is labeled 'Istituto Comprensivo Statale Giovanni Verga'. To its right is a large green field. In the lower right, a church building is labeled 'Chiesa S. Antonio di Padova'. A large, dense forest of green trees occupies the left and central portions of the image. A swimming pool is visible in the center, surrounded by trees. The town consists of numerous buildings with red-tiled roofs. A road runs horizontally across the lower part of the image.

Istituto Comprensivo
Statale Giovanni Verga

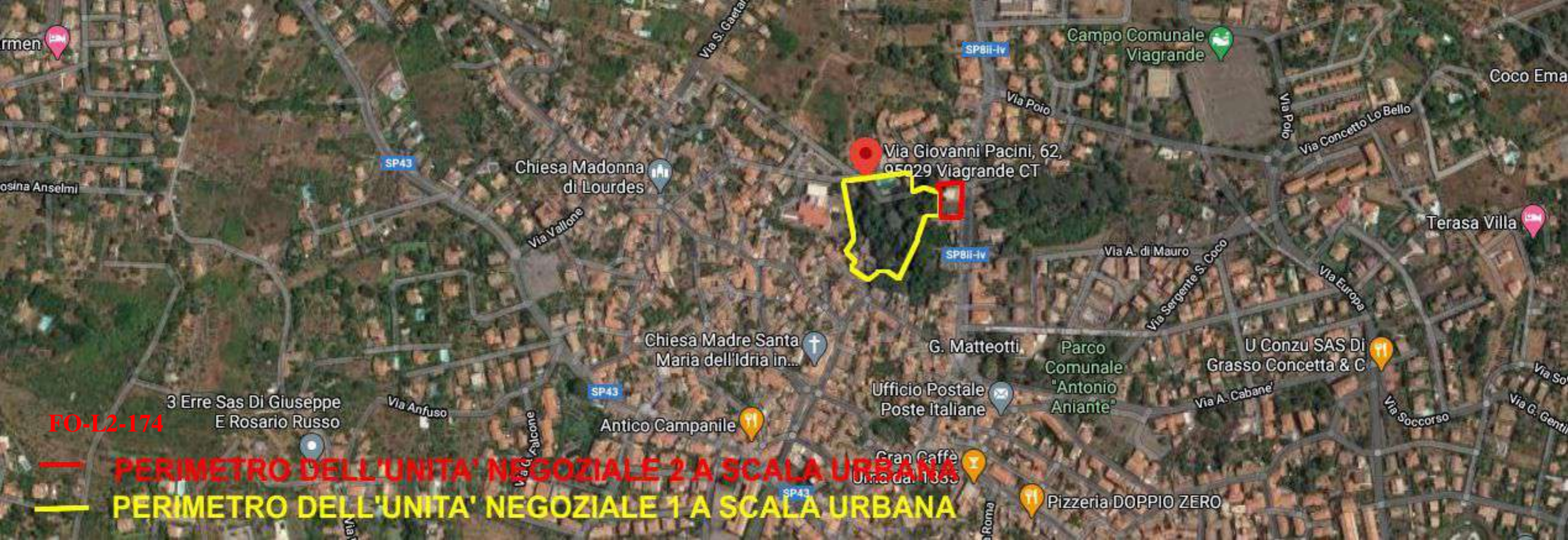
Chiesa S. Antonio
di Padova

FO-L2-172

— LOCALIZZAZIONE DEL COMPENDIO A SCALA TERRITORIALE SU FOTO AEREA



FO-L2-173



FO-L2-174

— PERIMETRO DELL'UNITA' NEGOZIALE 2 A SCALA URBANA
— PERIMETRO DELL'UNITA' NEGOZIALE 1 A SCALA URBANA



Via Giovanni Pacini

SP8ii-iv

Villa Manganelli Biscari
Chiuso temporaneamente

Casa

Fruttivendolo

SF8ii-iv

FO-L2-175

PERIMETRO LOTTO INDIVIDUATO AL N.C.T., AL FG-9, PARTICELLA 1948

- PERIMETRO DEL LOTTO IDENTIFICATO AL N.C.T. AL FOGLIO 9, PARTICELLA 1363
- PERIMETRO DEL LOTTO IDENTIFICATO AL N.C.T. AL FOGLIO 9, PARTICELLA 1948
- N.C.T. FOGLIO 9, PARTICELLA 1056

Istituto Comprensivo
Statale Giovanni Verga

VIA GARIBALDI

- VILLA MANGANELLI-BISCARI
- ACCESSO ALLA PARTICELLA 1363
DA VIA GARIBALDI 303

FO-L2-176

