



LUIGI MAINO
ARCHITETTO

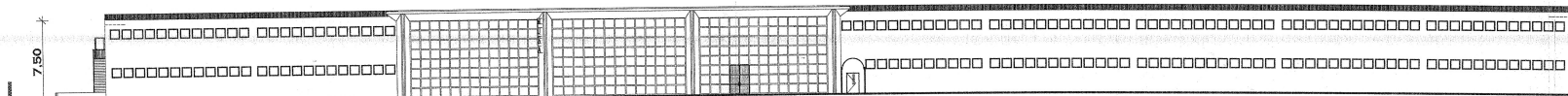
VIA E. ZOLA, 11 - ALTAMURA -
TEL. 080-3148177
C.F. MAINO LUIGI 48054 A255H

PROGETTO: COSTRUZIONE UFFICIO
INDUSTRIALE IN ALTAMURA - ZONA
INDUSTRIALE - VIA DEL TABACCO
[Accordo di programma del 27.12.99
ratificato C.C. del 25.01.00] 25.01.00

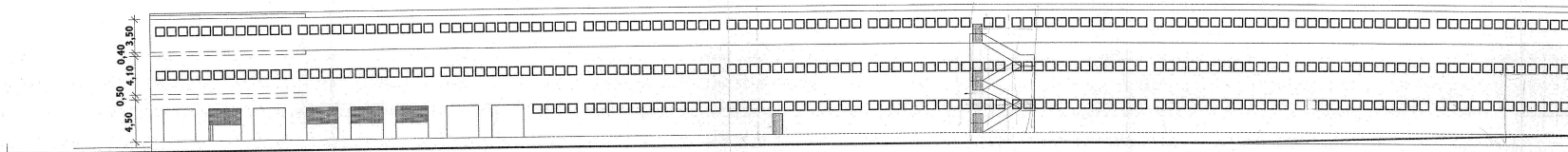
25.01.00

PROSPETTI - SEZIONI

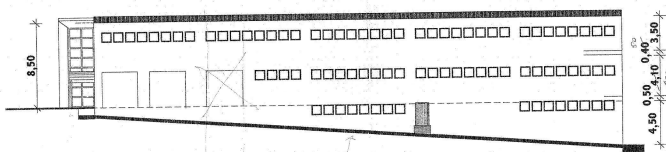
CANTIERE DI ALTAMURA
23-7-2000



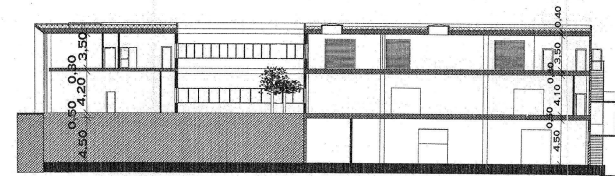
PROSPETTO VIA DEL TABACCO



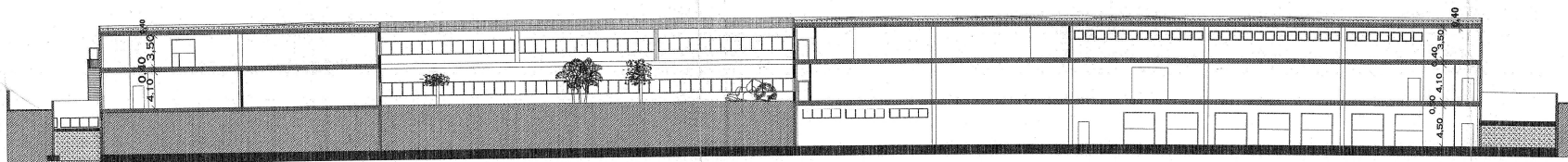
PROSPETTO INTERNO



PROSPETTO LATERALE



SEZIONE A/2 - A/2



SEZIONE A/1 - A/1